



# SIKA AT WORK

## RENOVATION OF UNDERGROUND CAR PARK SPARKASSE MOERS, GERMANY

WATERPROOFING: Sikalastic® M 689

BUILDING TRUST



# RENOVATION OF UNDERGROUND CAR PARK SPARKASSE MOERS

## PROJECT DESCRIPTION

**Project name:** Renovation underground carpark Sparkasse Moers

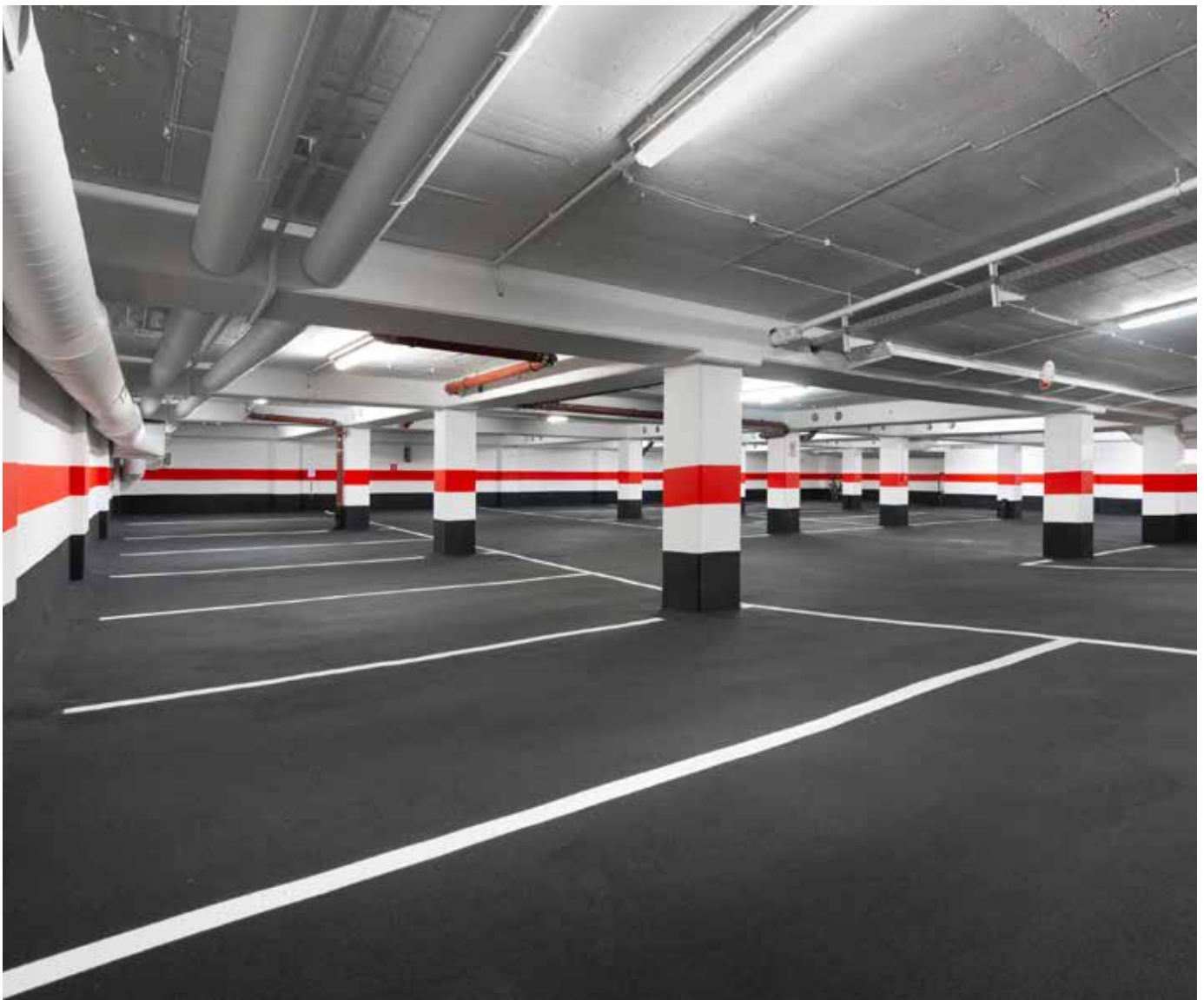
**Location:** Moers (Germany)

**Construction year:** 2020

**Size in m<sup>2</sup>:** approx. total 4,000 m<sup>2</sup> treated with Sikalastic® M 689 finished with overspray of the same Sikalastic® M 689.

## PROJECT REQUIREMENTS

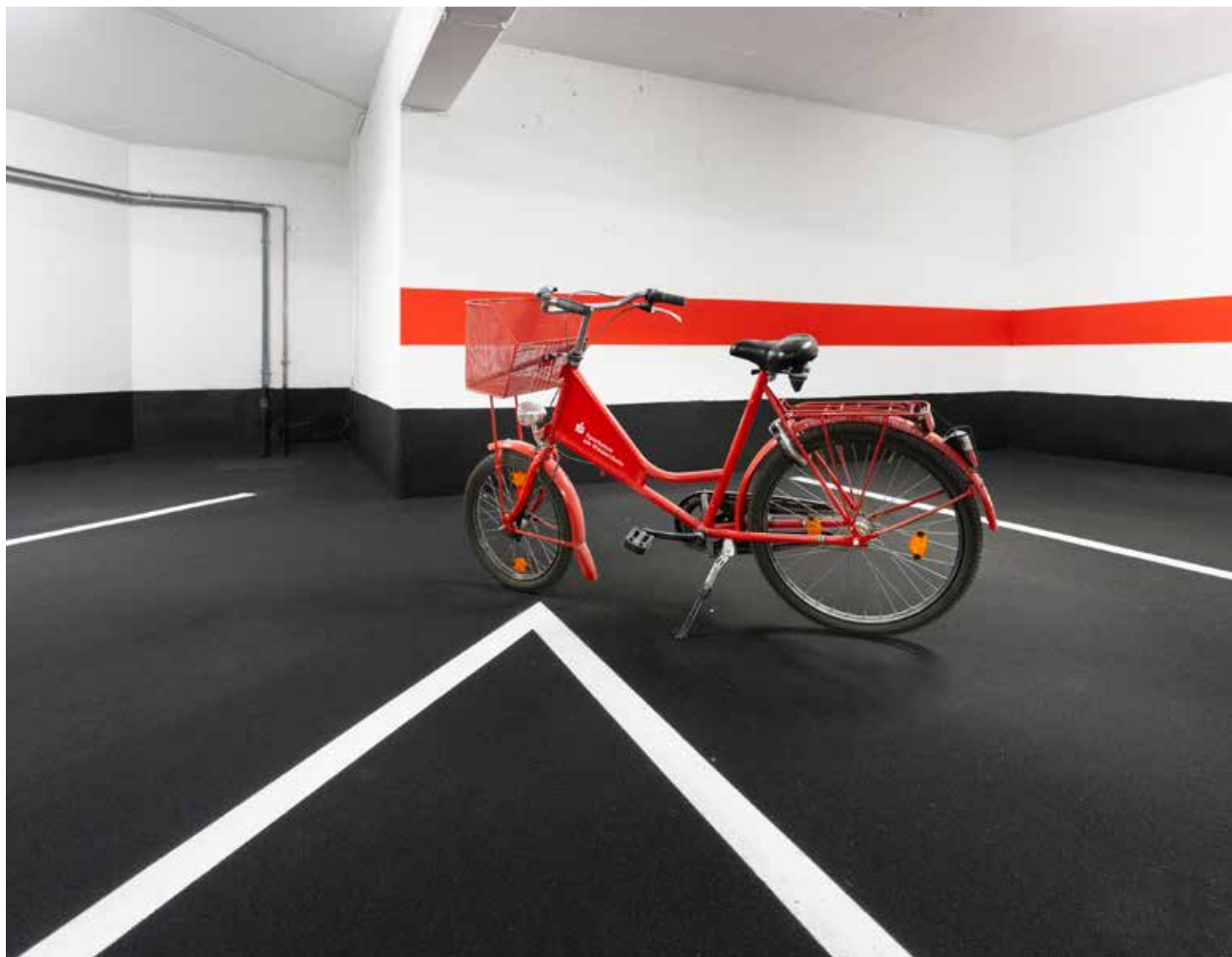
The 4,000 m<sup>2</sup> underground car park beneath the Sparkasse Moers headquarters required timely renovation. Despite chloride-induced reinforcement damage, the structural stability was still intact. The surface consisted partly of cracked concrete and partly of thin, unsealed asphalt with faulty joints. The work had to proceed in three phases while the car park remained open to heavy traffic, with minimal noise to avoid disrupting bank operations. Low ceiling height further complicated construction. The initial plan – removing chloride-contaminated concrete by water-jetting, reprofiling with shotcrete, and re-laying asphalt – would have generated excessive noise, dust, and costs due to the need for additional support structures.



### SIKA SOLUTIONS

To overcome the limitations described above, our polyurea system Sikalastic® M 689 with overspray was applied to the floor surfaces, support feet, and wall bases. Prior to this, cathodic corrosion protection (Grillo's KKS system with zinc) was installed to halt reinforcement corrosion. By switching to polyurea, costly asphalt and concrete removal or reprofiling was avoided. The resulting budget savings made it possible to add wall and ceiling coatings, further improving the overall appearance.

Sikalastic® M 689 oversprayed is classified as OS 10 according to Richtlinie für Schutz und Instandsetzung von Betonbauteilen – DAfStb – and CE marked according to EN 1504 part 2.



# RENOVATION OF UNDERGROUND CAR PARK SPARKASSE MOERS



## PROJECT PARTICIPANTS

Project owner: Sparkasse am Niederrhein,  
Hauptgeschäftsstelle, Moers

Architect: Althans Hesselmann + Partner Beratende Ingenieure  
PartG mbB, Oberhausen

Contractor: Weiss Oberflächentechnik GmbH, Duisburg

Sika organization: Germany

Any product name or reference reflects the Sika product name at the time of creation of this document and may differ from the product name or reference during past events.

Our most current General Sales Conditions shall apply. Please consult the most current local Product Data Sheet prior to any use.



**SIKA SERVICES AG**  
Tueffenwies 16  
CH-8048 Zurich  
Switzerland

**Contact**  
Phone +41 58 436 40 40  
[www.sika.com](http://www.sika.com)

**BUILDING TRUST**

