



WATERPROOFING

SikaShield®

MEMBRANES FOR BELOW  
GROUND WATERPROOFING

BUILDING TRUST



# SikaShield®

## MEMBRANES FOR BELOW GROUND WATERPROOFING

### FEATURES AND BENEFITS

**Waterproofing Excellence.** Sika has been a leading global waterproofing material and system supplier for more than 100 years.

→ **Access to full technical know-how across different technologies**

**Local Presence.** Sika's local team is available in the country to support its customers – technical training, specification support, etc.

→ **A strong local partner**

**Quality System.** As the membrane producer, Sika is in full control of product quality from formulation to sourcing, production and QC.

→ **A consistent, high-quality performance**

**In-House Production.** Sika's production sites in Italy, Austria, Germany, the Czech Republic and Romania are equipped with state-of-the-art production.

→ **A high level of availability and short lead times guaranteed**

### MEMBRANES FOR BELOW GROUND WATERPROOFING



#### SikaShield® P45 PE

- APP membrane,
- 4 mm
- Cold flex: -10°C
- Non-woven polyester reinforced
- For single or double layer systems



#### SikaShield® P32 PE

- APP membrane,
- 3 mm
- Cold flex: -5°C
- Glass fiber reinforced
- For double layer systems together with polyester reinforced membranes

### ADDITIONAL PRODUCTS

#### Primers:

- Sika® Igoflex® P-01 (water based)
- Sika® Igoflex® P-10 (solvent based)

#### Coating:

- Sika® Igoflex®-301 for the foundations, walls or sealing overlaps of the bituminous membranes

#### Joint sealing:

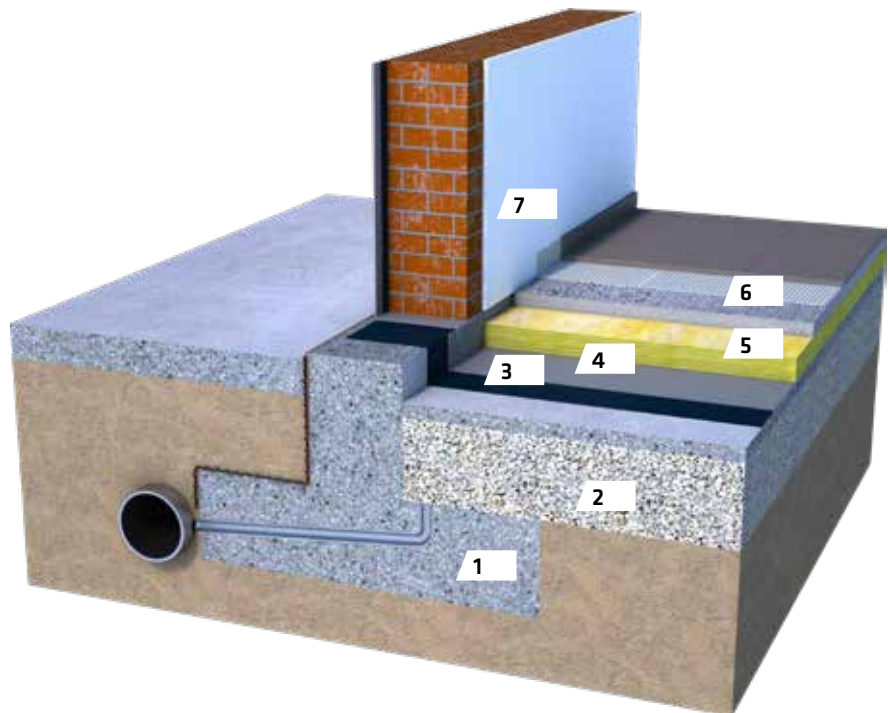
- SikaSwell® A

#### Mortar:

- SikaTop®-107 to protect the critical areas

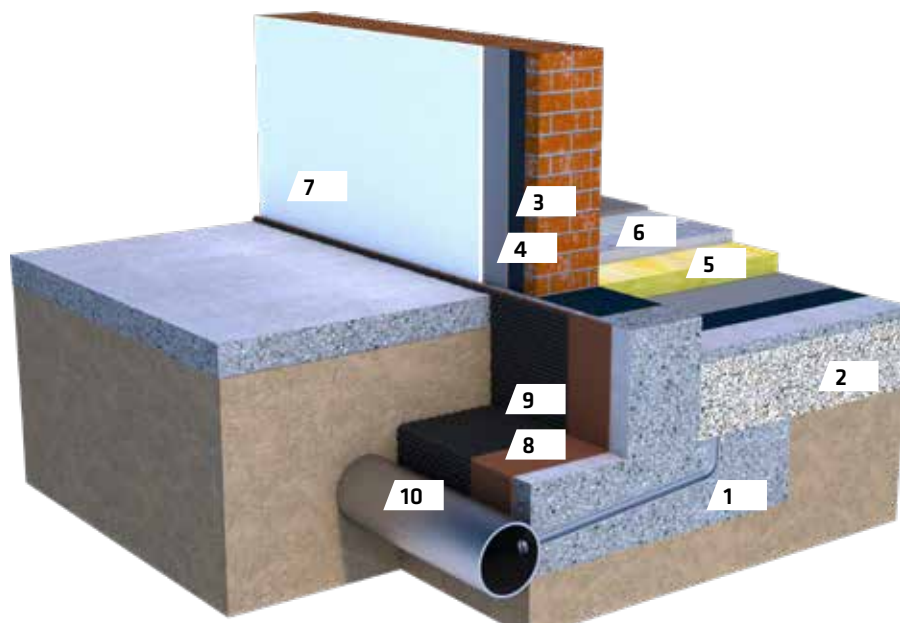
# FLOOR IN CONTACT WITH THE GROUND ON DAMP SOILS

1. Horizontal drainage
2. Concrete foundation
3. Sika® Igoflex® Primer
4. SikaShield® Membrane
5. Thermal insulation
6. Screed + floor covering
7. Wall + covering



View from inside of a floor in contact with the ground on damp soils.

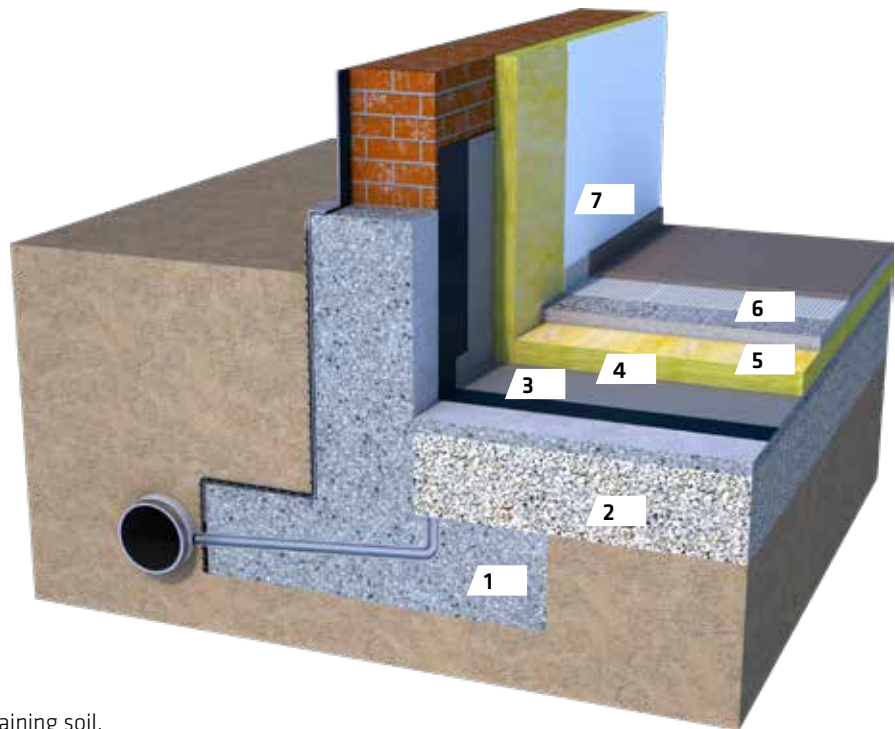
1. Concrete foundation
2. Horizontal drainage
3. Sika® Igoflex® Primer
4. SikaShield® Membrane
5. Thermal insulation
6. Screed + floor covering
7. Wall + covering
8. Sika® Igoflex® Coating
9. Sika® Drain-500 Geo
10. Drainage pipe



View from outside of a floor in contact with the ground on damp soils.

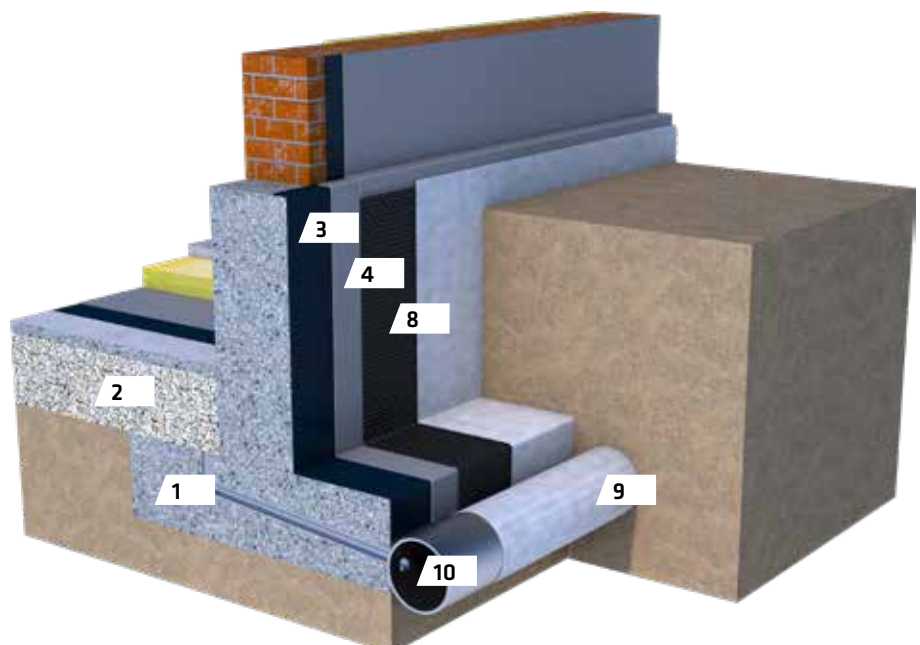
# BASEMENT IN DRAINING SOIL

1. Concrete foundation
2. Horizontal drainage
3. Sika® Igoflex® Primer
4. SikaShield® Membrane
5. Thermal insulation
6. Screed + floor covering
7. Wall + covering



View from inside of a basement in draining soil.

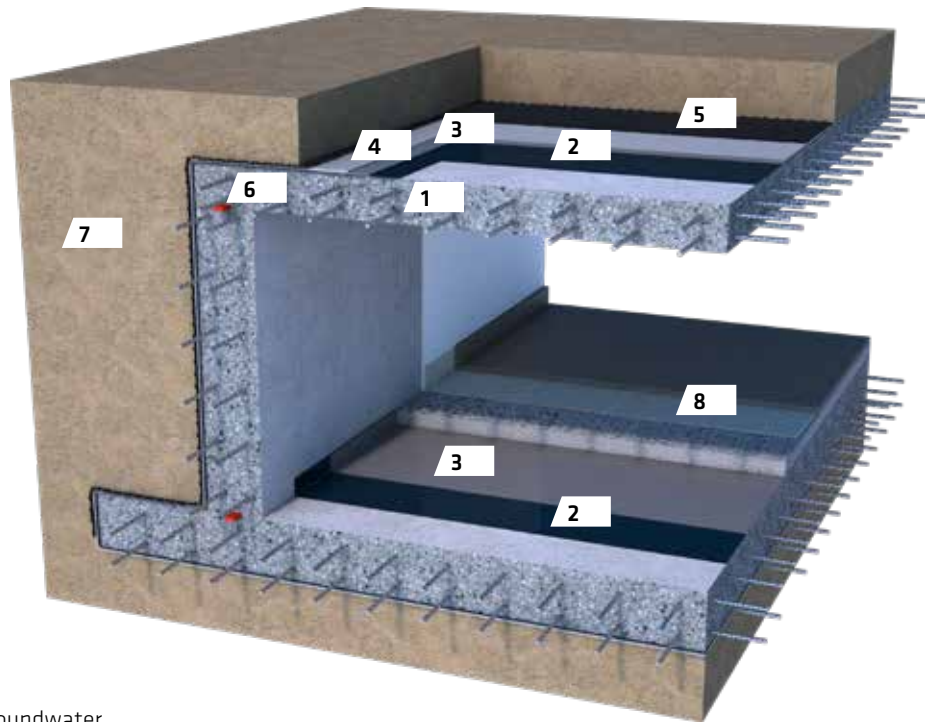
1. Concrete foundation
2. Horizontal drainage
3. Sika® Igoflex® Primer
4. SikaShield® Membrane
8. Sika® Drain
9. Non-woven polypropylene fabric
10. Drainage Pipe



View from outside of a basement in draining soil.

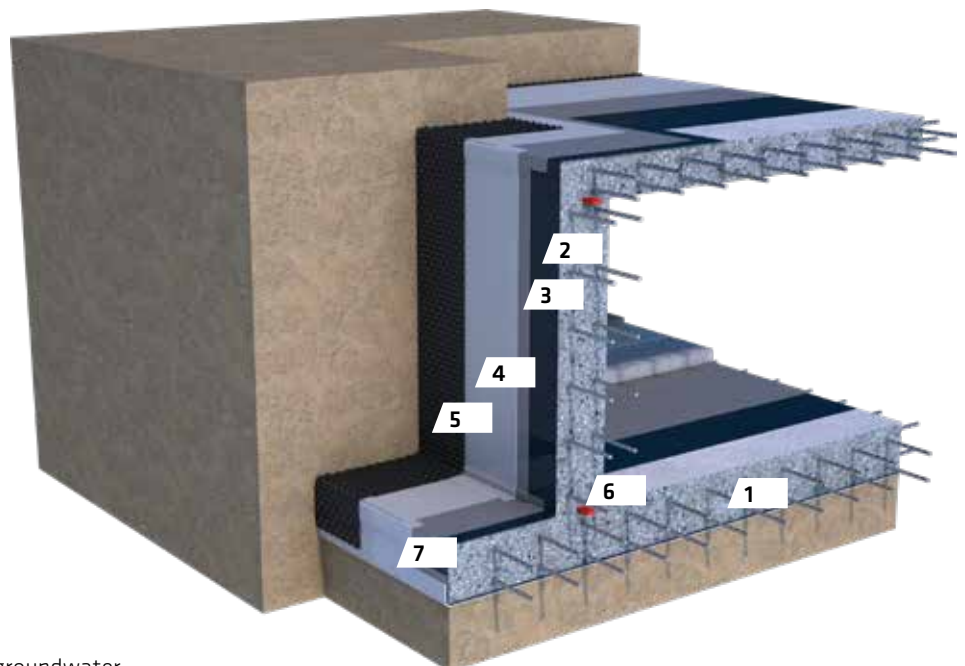
# FLOOR IN CONTACT WITH THE GROUND ON DAMP SOILS

1. Concrete foundation
2. Sika® Igoflex® Primer
3. 1<sup>st</sup> layer of SikaShield® Membrane
4. 2<sup>nd</sup> layer of SikaShield® Membrane
5. Protection Board
6. SikaSwell®
7. Soil
8. Screed + floor covering



View from inside of a basement in groundwater.

1. Concrete foundation
2. Sika® Igoflex® Primer
3. 1<sup>st</sup> layer of SikaShield® Membrane
4. 2<sup>nd</sup> layer of SikaShield® Membrane
5. Protection Layer
6. SikaSwell®
7. Pre-applied membrane



View from outside of a basement in groundwater.

# SikaShield® W

## THE BITUMINOUS MEMBRANE

### WET APPLIED

SikaShield® W IS AN INNOVATIVE BITUMINOUS MEMBRANE WHICH IS BONDED TO THE CONCRETE SUBSTRATE WITH A SPECIAL MODIFIED CEMENT-BASED ADHESIVE.

**WITH THIS UNIQUE SYSTEM,** the most common challenges on waterproofing below ground structures are overcome, providing an effective, easy and simple application for all seasons and job requirements.

**SikaShield® W is designed for** non-exposed waterproofing applications, such as:

- Foundations
- Basement slabs and walls in contact with the ground
- Balconies
- Podium slabs
- Wet areas

## CHARACTERISTICS AND ADVANTAGES

### **EASY TO APPLY:**

Minimum substrate preparation

### **FAST INSTALLATION:**

Can be applied on green concrete

### **ALL SEASONS:**

Application can continue once the rain stops

### **SAFE TO INSTALL:**

Application in confined spaces and/or walls is simple, easy and effective

### **FULLY BONDED:**

Completely adhered to the substrate


### **HIGH ADHESION:**

Excellent peel adhesion to the concrete surface



The self-priming cement-based adhesive, **SikaShield® W1**, acts as levelling compound and a sealing adhesive resulting in a strong and lasting bond between the concrete substrate and the membrane, avoiding any lateral water migration and reducing the risks of leakages.

## APPLICATION STEPS:

<h1>1</h1>  <p><b>SURFACE PREPARATION</b></p> <p>Smoothen sharps and edges and make it wet with a water hose.</p>	<h1>2</h1>  <p><b>APPLICATION OF THE ADHESIVE</b></p> <p>Apply the SikaShield® W1 on the prepared substrate.</p>	<h1>3</h1>  <p><b>APPLICATION OF THE MEMBRANE</b></p> <p>Apply the SikaShield® W membranes over the adhesive while it is still wet.</p>	<h1>4</h1>  <p><b>READY FOR THE NEXT STAGE</b></p> <p>Your basement is ready for the next step.</p>
---	--	--	---

**The application of the adhesive SikaShield® W1** is simple as any other mortar. Simply mix with water and apply over the substrate with a trowel or spatula.

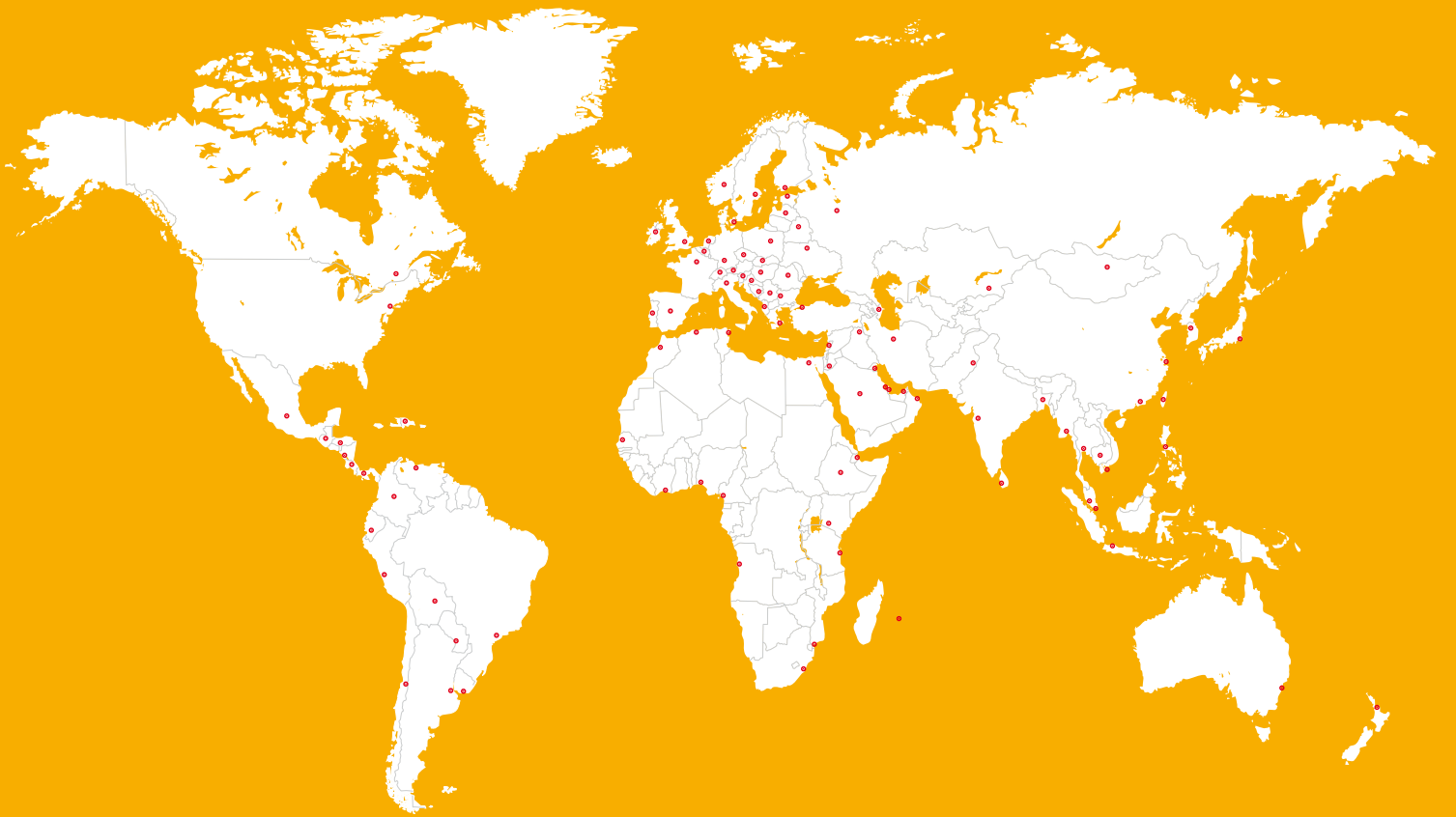
The SikaShield® W bituminous membrane is then applied over the adhesive while it is still wet. Immediately after, the membrane sticks to the surface and the adhesion improves day by day, providing the effective fully bonded system.

After this, the waterproofing system is ready for the backfilling and to proceed with the next steps.

**SikaShield® W is available in different versions**, including thickness, top surfaces and adhesives. Everything to match the requirements of the local countries.



# GLOBAL BUT LOCAL PARTNERSHIP



## FOR MORE SIKA WATERPROOFING INFORMATION:



### WE ARE SIKA

Sika is a specialty chemicals company with a leading position in the development and production of systems and products for bonding, sealing, damping, reinforcing and protecting in the building sector and the motor vehicle industry. Sika's product lines feature concrete admixtures, mortars, sealants and adhesives, structural strengthening systems, industrial flooring as well as roofing and waterproofing systems.

Our most current General Sales Conditions shall apply. Please consult the most current local Product Data Sheet prior to any use.



**SIKA SERVICES AG**  
Tueffenwies 16  
CH-8048 Zurich  
Switzerland

**Contact**  
Phone +41 58 436 40 40  
[www.sika.com](http://www.sika.com)

**BUILDING TRUST**

