



YOUR TRUSTED PARTNER IN  
CAR PARKING GARAGES

BUILDING TRUST



# CHALLENGES IN CAR PARKING GARAGES

## YOUR TRUSTED PARTNER

At Sika, we understand the challenges and complexities involved in constructing and maintaining car parking garages. From exposure to harsh weather and vehicle traffic to strict safety and durability requirements, every detail matters – and we're here to help you get it right.

We offer a complete range of high-performance construction solutions, covering your entire project from ground bearing slab to rooftop parking decks. Whether you're building new or refurbishing an existing facility, Sika simplifies the process with a single, reliable partner for all your needs.

Innovation is at the core of everything we do. Our advanced technologies deliver proven durability, outstanding resistance to wear and chemicals, and long-term performance – helping you stay on schedule, on budget, and ahead of expectations. And with sustainability built into our solutions, you can be confident your project meets today's environmental standards.

From waterproofing systems and protective coatings to flooring solutions designed for durability and safety, every part of your car parking garage must perform under pressure. No one understands these demands better than Sika. We're trusted by facility owners, engineers, and contractors worldwide to deliver construction solutions that meet the unique challenges of the car parking garage environment.



### MINIMIZING DOWNTIME

Car parking garage refurbishments or new constructions often come with tight deadlines, and every day a facility stays closed means lost revenue. The parking industry requires fast-curing, easy-to-apply, and non-disruptive systems that allow work to progress with minimal interruption. Sika provides efficient, high-performance solutions that minimize downtime while ensuring compliance and providing the long-term durability essential for high-traffic parking environments.



### REDUCING MAINTENANCE COSTS

Car parking garage owners face constant pressure to cut operational expenses while ensuring long-lasting performance. This calls for high-quality materials that are durable, easy to clean, and require fewer repairs or replacements over time. Sika's robust systems are designed with this in mind – extending the service life of your facility and significantly lowering long-term maintenance costs.



### STRUCTURAL LOAD REQUIREMENTS

Modern car parking garages must be designed to handle growing traffic volumes and increasingly heavier vehicles, all while complying with evolving safety standards and building codes. Our solutions support structural integrity under demanding load conditions, ensuring long-term performance, user safety, and regulatory compliance.

# YOUR CHALLENGES, OUR SOLUTIONS



CONTACT YOUR  
SIKA EXPERT FOR  
ADDITIONAL  
INFORMATION

1

High-frequency traffic, intense braking and acceleration, and limited maintenance windows make ramps and entrance areas some of the most demanding zones in any car parking garages, requiring durable solutions that ensure performance while minimizing downtime.

## RAMPS AND ENTRANCE AREAS

**Concrete production:** SikaControl®, Sika® ViscoCrete®  
**Waterproofing:** SikalInject®, Sikalastic®  
**Floors:** Sikafloor® OneShot, Sikafloor® Multiflex  
**Joint sealing:** Sikaflex®, Emseal  
**Fire protection:** Sikasil®, Sika® Backer Rod Fire  
**Concrete repair and protection:** Sika MonoTop®, SikaEmaco®  
**Structural strengthening:** SikaWrap®, Sika CarboDur®  
**Advanced inspection and monitoring:** DuraMon sensors

2

Staircases and pedestrian areas, often exposed to high foot traffic and enclosed conditions, demand safe, durable, and fire-protected solutions that also contribute to reducing maintenance costs.

## STAIRCASES AND PEDESTRIAN AREAS

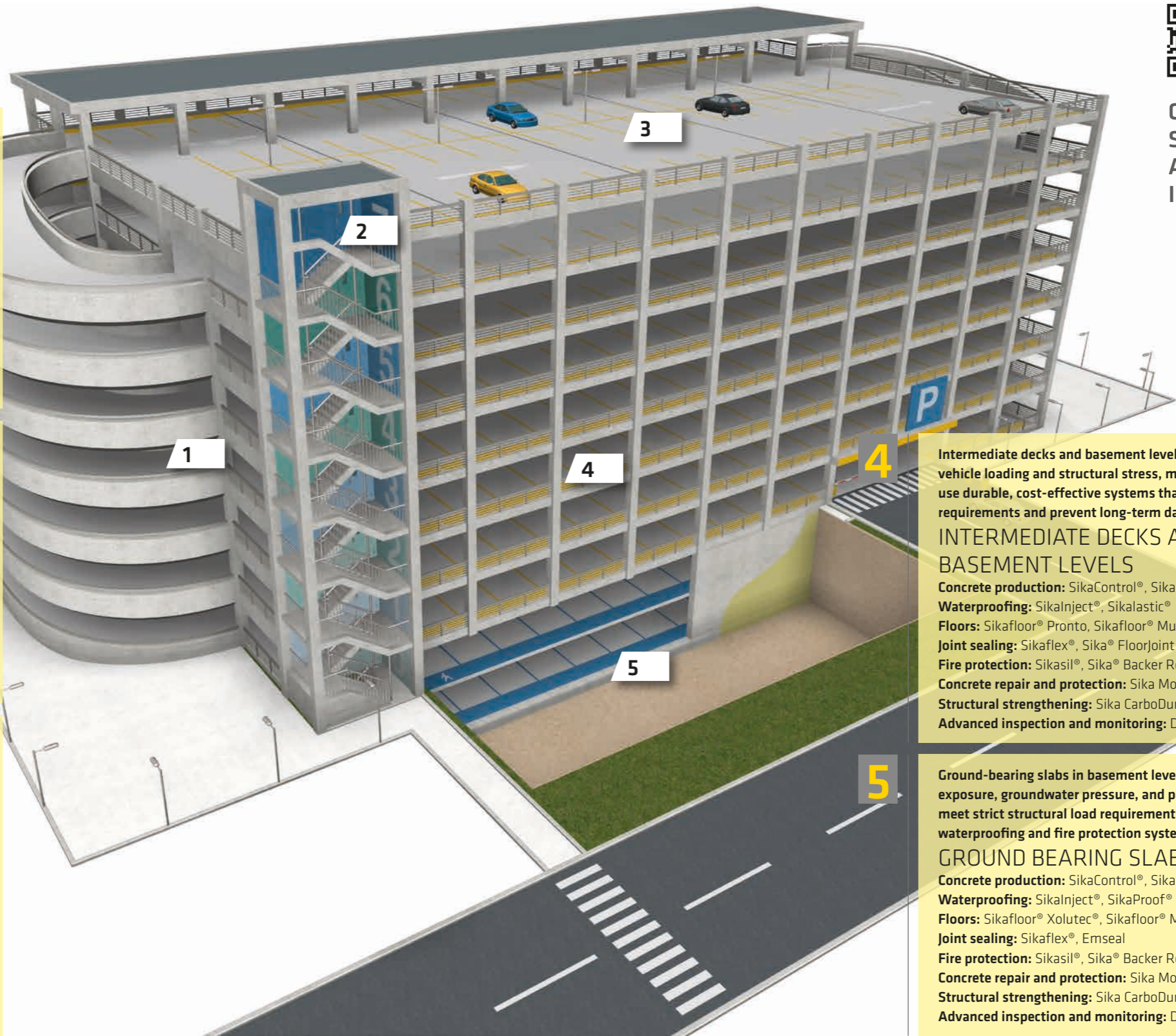
**Concrete production:** SikaControl®, Sika® ViscoCrete®  
**Waterproofing:** SikalInject®, Sikalastic®  
**Floors:** Sikafloor® MultiDur, Sikafloor® DecoDur  
**Roofs:** SikaShield®, Sikaplan®  
**Joint sealing:** Sikaflex®, Emseal  
**Fire protection:** Sika® Backer Rod Fire, SikaSeal®  
**Concrete repair and protection:** Sika MonoTop®, SikaEmaco®  
**Structural strengthening:** Sika CarboDur®, SikaWrap®

3

Top decks and exposed areas must resist not only vehicle loads and chemicals, but also extreme weather, UV radiation, and thermal movements that cause structural stress and material fatigue – demanding resilient systems that offer long-term protection and help reduce maintenance costs throughout the car parking garage's lifecycle.

## TOP DECKS AND EXPOSED AREAS

**Concrete production:** SikaControl®, Sika® ViscoCrete®  
**Waterproofing:** SikalInject®, Sikalastic®  
**Floors:** Sikafloor® Multiflex, Sikafloor® Pronto  
**Roofs:** SikaShield®, Sikaplan®  
**Joint sealing:** Sikaflex®, Sika® FloorJoint  
**Concrete repair and protection:** Sika MonoTop®, SikaEmaco®  
**Structural strengthening:** Sika CarboDur®, SikaWrap®  
**Advanced inspection and monitoring:** DuraMon sensors



4

Intermediate decks and basement levels are subject to continuous vehicle loading and structural stress, making it essential to use durable, cost-effective systems that meet structural load requirements and prevent long-term damage.

## INTERMEDIATE DECKS AND BASEMENT LEVELS

**Concrete production:** SikaControl®, Sika® ViscoCrete®  
**Waterproofing:** SikalInject®, Sikalastic®  
**Floors:** Sikafloor® Pronto, Sikafloor® Multiflex  
**Joint sealing:** Sikaflex®, Sika® FloorJoint  
**Fire protection:** Sikasil®, Sika® Backer Rod Fire  
**Concrete repair and protection:** Sika MonoTop®, SikaEmaco®  
**Structural strengthening:** Sika CarboDur®, SikaWrap®  
**Advanced inspection and monitoring:** DuraMon sensors

5

Ground-bearing slabs in basement levels face constant moisture exposure, groundwater pressure, and poor ventilation, and must meet strict structural load requirements, making advanced waterproofing and fire protection systems critical.

## GROUND BEARING SLAB

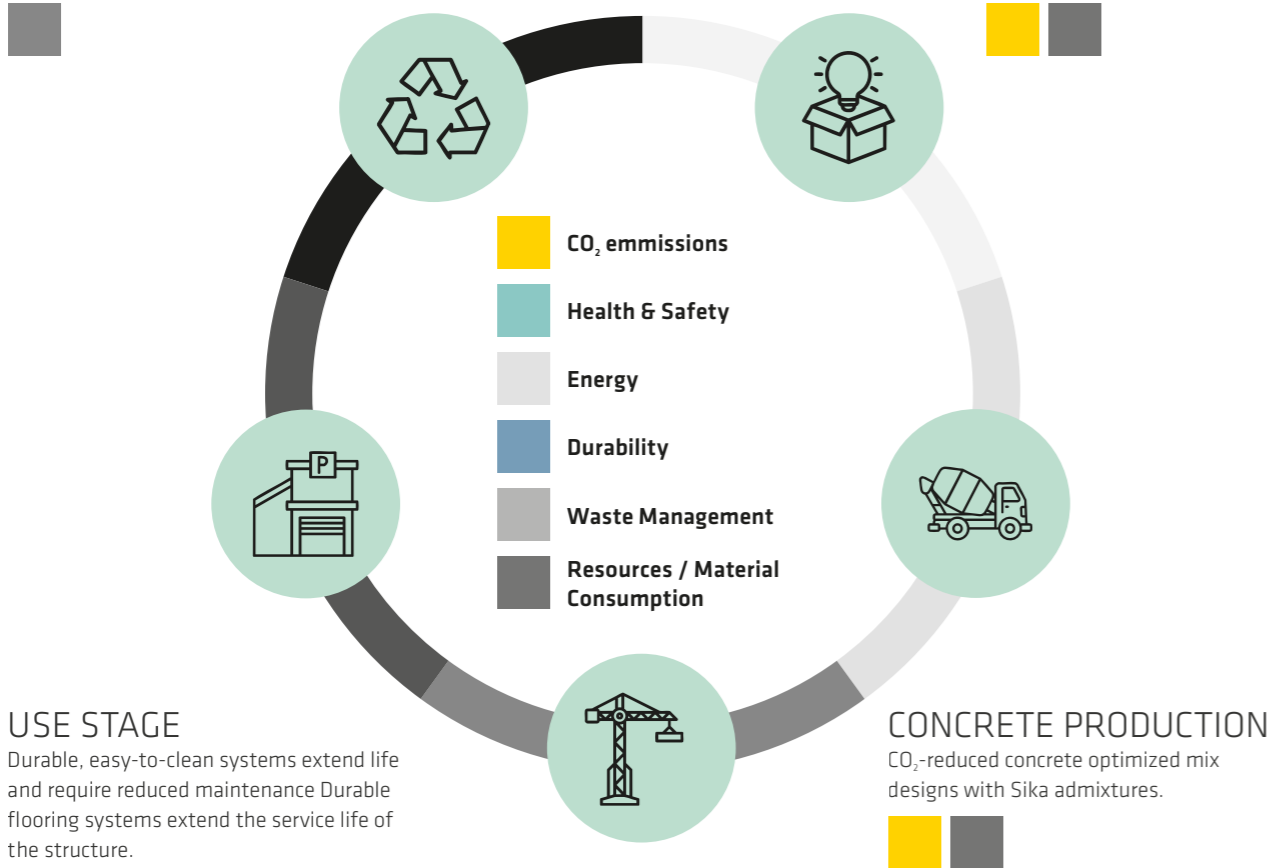
**Concrete production:** SikaControl®, Sika® ViscoCrete®  
**Waterproofing:** SikalInject®, SikaProof®  
**Floors:** Sikafloor® Xolutec®, Sikafloor® MultiDur  
**Joint sealing:** Sikaflex®, Emseal  
**Fire protection:** Sikasil®, Sika® Backer Rod Fire  
**Concrete repair and protection:** Sika MonoTop®, SikaEmaco®  
**Structural strengthening:** Sika CarboDur®, SikaWrap®  
**Advanced inspection and monitoring:** DuraMon sensors

# SUSTAINABLY DURABLE AND EFFICIENT

At Sika, we understand your commitment to sustainability in car parking garages. Our solutions support sustainability at every stage of your facility's lifecycle, from responsible product selection and efficient application to long-lasting performance and end-of-life considerations. Whether it is low emission flooring systems that improve air quality or durable waterproofing solutions that prevent structural damage and extend the service life of your facility, we help you achieve your goals by delivering quantified sustainable benefits through reliable and environmentally conscious solutions. We carefully analyze all key sustainability aspects, including resource and material efficiency, waste reduction, durability, energy savings, health and safety, and CO<sub>2</sub> emissions, to help you identify how to optimize your project sustainably at every step.

## END OF LIFE STAGE

Recyclable materials and support for circular construction



# DRIVING DIGITALIZATION

## IN CAR PARKING GARAGES CONSTRUCTION AND MAINTENANCE

Digital transformation is reshaping how car parking garage are planned, built, and maintained. As the industry faces increasing pressure for efficiency, compliance, and sustainability, Sika supports this evolution with advanced digital solutions tailored to meet these demands.

Sika understands the complexity of decision-making across the project lifecycle and the importance of minimizing risk at every stage. Our technologies and experts provide reliable data for your BIM models, enabling smarter collaboration and informed decisions in your virtual design and planning environments.

Through SikaVision®, our comprehensive digital solutions portfolio, we offer a growing range of tools and services that help you monitor, optimize, and predict key aspects of your construction or refurbishment projects. This ensures improved outcomes, reduced downtime, and long-term value.



SikaVision® represents our commitment to the future of construction. By integrating these digital tools and products into your projects, you can:

- **Enhance efficiency:** Streamline your processes, reduce errors, and achieve faster project completions.
- **Make informed decisions:** Our simulators, visualizers, and real-time monitoring systems help you stay ahead with data-driven decisions.
- **Maximize product performance:** Our digital products ensure that you are getting the most out of your Sika product investments.

Discover each of our digital tools and products in detail by exploring their dedicated webpages.



**SikaVision® DIGITAL  
PRODUCTS & TOOLS**

# A GLOBAL COMPANY BUT LOCAL PARTNER



## FOR MORE INFORMATION ABOUT SIKA SOLUTIONS FOR PROJECTS:



### WE ARE SIKA

Sika is a specialty chemicals company with a globally leading position in the development and production of systems and products for bonding, sealing, damping, reinforcing, and protection in the building sector and industrial manufacturing. Sika has subsidiaries around the world and produces innovative technologies for customers worldwide. In doing so, it plays a crucial role in enabling the transformation of the construction and transportation sector toward greater environmental compatibility.

Any product name or reference reflects the Sika product name at the time of creation of this document and may differ from the product name or reference during past events.

Our most current General Sales Conditions shall apply.

Please consult the most current local Product Data Sheet prior to any use.



**SIKA SERVICES AG**  
Tueffenwies 16  
CH-8048 Zurich  
Switzerland

**Contact**  
Global Project Support  
Phone +41 58 436 40 40  
[www.sika.com](http://www.sika.com)

**BUILDING TRUST**

