



# SIKA AT WORK

## BERTAM OILFIELD – A, GROUTED CLAMP LEG REPAIR, MALAYSIA

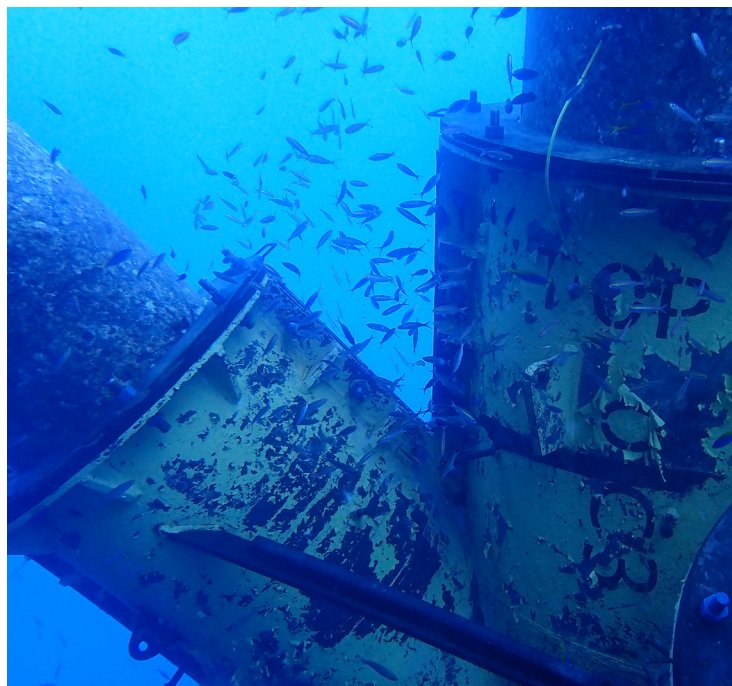
OFFSHORE & MARINE CONSTRUCTION  
CONVENTIONAL ENERGY

BUILDING TRUST





# BERTAM OILFIELD – A, GROUTED CLAMP LEG REPAIR, MALAYSIA



## PROJECT DESCRIPTION

Sika was contracted by ECMS Resources Sdn. Bhd. to supply the engineering services and materials required for the design, fabrication, and installation of an engineered grouted clamp. The clamp was required at the Bertam Wellhead Platform A, located in the Bertam Oilfield, approximately 160 km offshore from Kuantan, Peninsular Malaysia. Given the underwater environment of the wellhead platform, SikaGrout®-9550 was selected for the project.

Project name: Bertam – A, Leg Repair by Grouted Clamp  
Location: Bertam oilfield, offshore Kuantan, Peninsular Malaysia  
Year: 2022  
Application: Structural strengthening  
Product: SikaGrout®-9550

## PROJECT REQUIREMENTS

The scope of work for this project included the engineering and design of the grouted clamp, the supply of 16 MT of SikaGrout®-9550, and the subsequent grouting of the clamp. Additionally, quality checks were required throughout the process to ensure adherence to project standards, culminating in a comprehensive closeout phase to finalize the work.

Any product name or reference reflects the Sika product name at the time of creation of this document and may differ from the product name or reference during past events.

Our most current General Sales Conditions shall apply. Please consult the most current local Product Data Sheet prior to any use.



**SIKA SERVICES AG**  
Tueffenwies 16  
CH-8048 Zurich  
Switzerland

**Contact**  
Phone +41 58 436 40 40  
www.sika.com

## SIKA SOLUTIONS

Sika provided detailed engineering and analysis, the design of the grouted clamp as well as the supply of grout materials, equipment and skilled manpower. On-site quality control checks, laboratory testing and equipment functionality tests were conducted to ensure the project's success and adherence to high standards.

## CUSTOMER BENEFITS

- This subsea grouting project featured an exceptionally large clamp, engineered in three sections to meet the unique requirements of the Bertam Wellhead Platform. The solution showcased the adaptability and effectiveness of advanced grouting technology in a demanding marine environment.
- Executed with precision and in full compliance with the highest industry standards, the project was successfully completed earning positive feedback from the client for its quality, efficiency, and adherence to the agreed timeline.
- The grouted clamp methodology enabled repairs to be carried out without any operational downtime at the wellhead platform. This ensured uninterrupted production while maintaining the structural integrity of the facility.
- The superior fatigue performance of SikaGrout®-9550 was rigorously validated through testing in collaboration with Leibniz Universität Hannover. These results confirmed that DNV-OS-C502 standards can be applied conservatively when predicting the fatigue life of grouted connections. Additionally, the SikaGrout® products – renowned for their high-temperature performance and ability to be pumped through long 2" and 3" hoses – have been successfully deployed in over 60 offshore projects across Southeast Asia, India, and the Middle East.