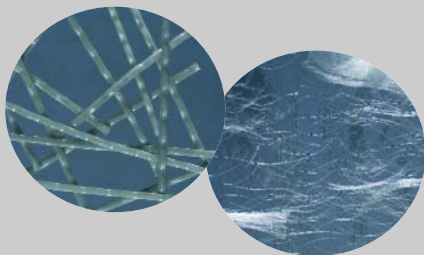


PROJECT SPOTLIGHT

**Service/ Warehouse Facility
Santiago, Chile**

As a result of using Novomesh 950 the contractor was able to save approximately 30% of the original slab cost.



PROJECT DATA

Project: Service Warehouse
Client: Lanz Putzmeister
Fibre type: Novomesh 950
Dosage rate: 3.6 kg/m³
Flooring contractor: AFS
Concrete producer: Hormigones Lafarge
Floor Area: 1000 m²
Completion Date: December 2008



Lanz Putzmeister, a member of the LANZCO Group, represents globally recognized products and solutions for the construction and mining industries. Specializing in concrete and material placing equipment Lanz Putzmeister is one of South America's

most recognized and respected suppliers of concrete pumps, tunnel machines, industrial pumps, mortar machines and professional high-pressure cleaners.

The internal & external slabs to this service/warehouse facility in Santiago were originally designed as a 200mm thick, ground supported floor reinforced with traditional steel wire fabric. After consultation with Propex Concrete Systems the design was changed to a 150mm thick slab reinforced with Novomesh 950 which is an engineered combination of micro & macro synthetic fibres. This unique combination provides a non-rusting fibre reinforcement system offering performance benefits over the entire life-span of the concrete.

As a result of using Novomesh 950 the contractor was able to save approximately 30% of the original slab cost. The client reports that the internal & external slabs are working well under heavy loading conditions.



**ENDURO®
FIBERMESH®**

PROPEX
CONCRETE SYSTEMS

NORTH AMERICA
Propex Concrete Systems Corp.
6025 Lee Highway, Suite 425
PO Box 22788
Chattanooga, TN 37422
Tel: + 1 800 621 1273
Tel: + 1 423 892 8080
Fax: + 1 423 892 0157

INTERNATIONAL
Propex Concrete Systems Ltd.
Propex House, 9 Royal Court, Basil Close
Chesterfield, Derbyshire, S41 7SL, UK
Tel: + 44 (0) 1246 564200
Fax: + 44 (0) 1246 465201

www.fibermesh.com