

SikaGrout®-340
HIGH PERFORMANCE



HIGH EARLY AND FINAL STRENGTHS

HIGH BUILD UP ≤ 300 MM IN ONE GO

PRE-MIXED TO ENSURE QUALITY



CAN BE
PUMPED UP TO
140 M EVEN
VERTICALLY

NO
SEGREGATION

KNOW-HOW
FROM SITE TO SHELF



Our most current General Sales Conditions shall apply.
Please consult the most current local Product Data Sheet prior to any use.

Sika Services AG
Refurbishment
CH-8048 Zurich
Switzerland
Phone +41 58 436 23 68
www.sika.com



SikaGrout®-340
WHEN STRENGTH COUNTS

High performing, cementitious, shrinkage compensated grout with high early and final strength providing premium bearing capacity

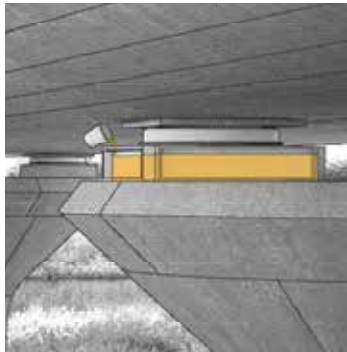


SikaGrout®-340 - HIGH PERFORMING CEMENTITIOUS GROUT

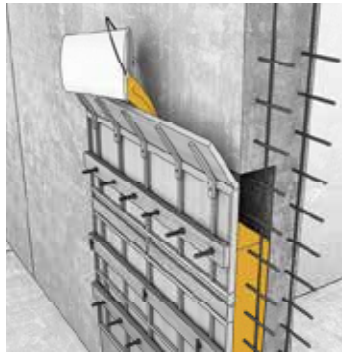
HIGH EARLY AND FINAL STRENGTHS, SHRINKAGE COMPENSATED

USES

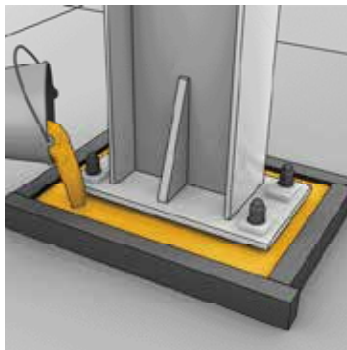
- Repair of spalling and damaged concrete in buildings, bridges, infrastructure and superstructure works.
-> **Restoration work**
- Transfer loads from heavy equipment, machines to their foundations.
-> **Load transfer**
- Filling and sealing joints in pre-cast concrete sections or around penetrations.
-> **Filling gaps and void**



Fixing



Enlarging and repairing elements in confined areas



Grouting column base plates



Grouting machine bases



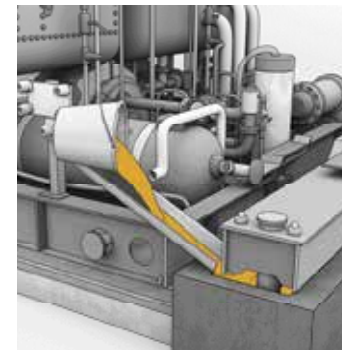
HOW TO MIX:

1. Place minimum recommended water ratio in mixing container.
2. Progressively add powder whilst mechanically mixing using low speed (max. 500 rpm) electric drill.
3. Add more water if required to suit the desired consistency and flow properties but not exceeding maximum dosage.
4. Mix in total for minimum 3 minutes or until the material is homogenous.



HOW TO APPLY:

1. Prepare the substrate until it is clean, free from dust or loose material. Make sure the surface it is not contaminated. Pre-wet the surface.
2. Pour or pump the grout with suitable tools or equipment.
3. Grouting area must always be confined.



Pourable



Pumpable